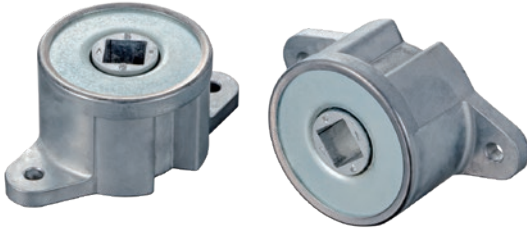


# Vane Damper

## FYN-Z2 Series

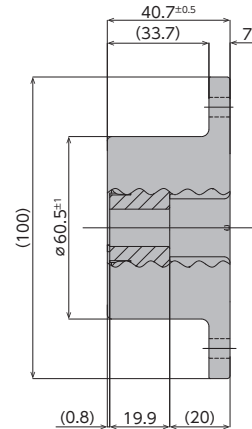
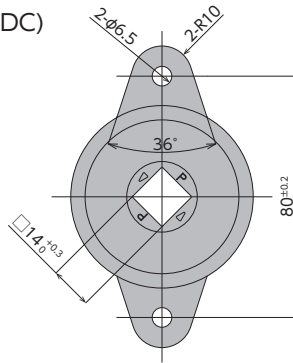
### Specifications



Model	Max. torque	Reverse torque	Directions
FYN-Z2-R354	35N·m (350kgf·cm)	3 N·m or lower (30 kgf·cm or lower)	Clockwise
FYN-Z2-L354			Counterclockwise

Note) Measured at 23°C±2°C

- \*Max. angle 94°
- \*Operating temperature -5~50°C
- \*Weight 506±10g
- \*Body material Zinc die-cast (ZDC)
- \*Cap material Iron (SPFC)
- \*Rotor material Zinc die-cast (ZDC)
- \*Oil type Silicone oil



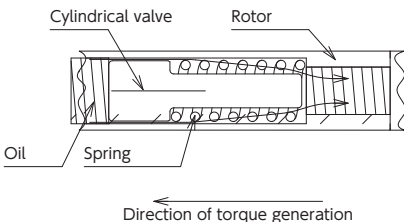
### How to Use the Damper

#### 1. Operating characteristics of self-adjusting oscillating dampers

In a conventional oscillating damper, the damping strength (damping constant) does not change regardless of the load torque used. Therefore, the operating speed is slower when the load torque is small, and faster when the load torque is large.

However, since the self-adjusting FYN-X2 series is designed to self-adjust the damping strength (damping constant) according to the applied load, its motion-time fluctuates less than that of conventional dampers when the load changes.

The acceptable range of torque is 20 to 35 N·m. Please select your damper by referring to the motion-time graph below.



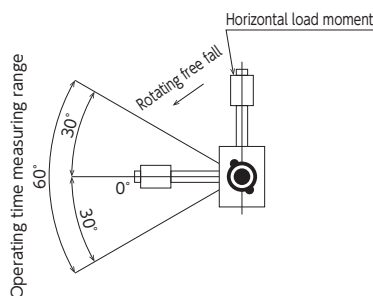
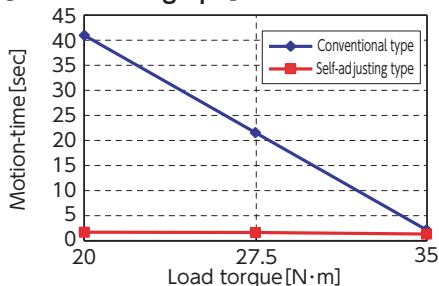
#### [Operating principles of the self-adjusting type]

As shown in the diagram to the left, the spring compressed by the movement of the cylindrical valve alters the amount of oil flow so as to adjust the generated torque of the damper. (Patent pending)

#### [Measurement conditions for the motion-time graph]

- Measuring temperature : Room temperature (23±3°C)
- Load torque : 20~35N·m
- Measuring angle: +30°~-30°

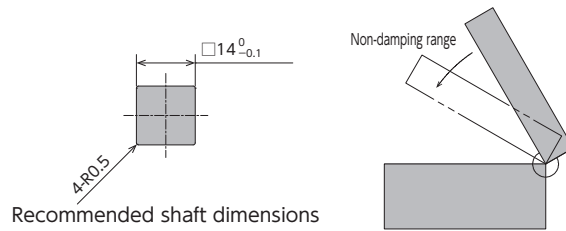
#### [Motion time graph]



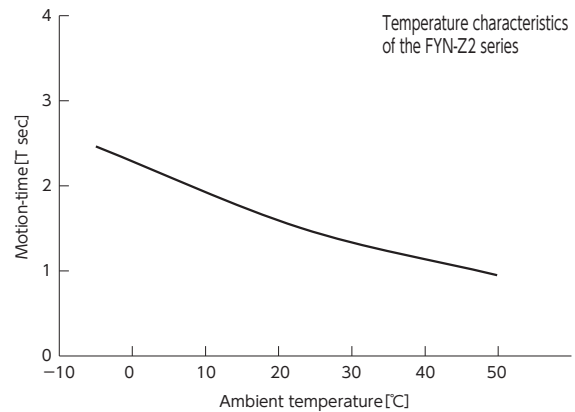
As the level of self-adjustment may vary depending on the range of the working angle of the actual work, please verify under actual working conditions before you select your damper.

●Products specification might be changed without notice.

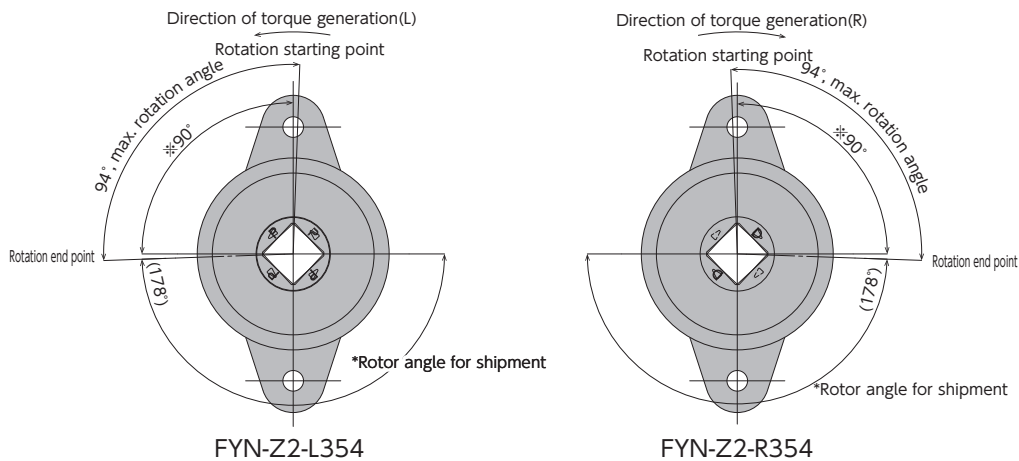
2. When using the damper, please ensure that a shaft with specified angular dimensions is inserted in the damper's shaft opening. Also, please ensure a tight fit between the shaft and the damper shaft's opening. Without a tight fit, the play becomes larger in a closing motion, etc., and the lid may not slow down properly. Please see the diagrams to the right for the recommended shaft dimensions for a damper.



3. Damper characteristics vary according to the ambient temperature. In general, the damper characteristics become weaker as the temperature increases, and become stronger as the temperature decreases. This is because the viscosity of the oil inside the damper varies according to the temperature. When the temperature returns to normal, the damper characteristics will return to normal as well. The time it takes for the lid to close is shown in the graph to the right.



4. The damper's working angle is 94° as shown below. Rotating the damper beyond this angle will cause the damage to the damper. Please ensure that an external stopper is in place.



5. Because the FYN-Z2 series is a self-adjusting type, the torque cannot be adjusted manually. However, by altering the viscosity of the oil, its damper characteristics can be modified.

\* Please contact us, as this is a custom order,

6. The direction in which torque is generated varies according to the model. Please select the appropriate model for your purpose.