



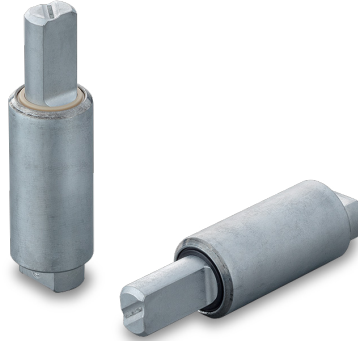
Vane Damper

Vane Damper

1 One way	115° Max. angle	F Fixed
---------------------	---------------------------	-------------------

● Specifications are subject to change without notice.

115° Max. angle FYN-U1 Series

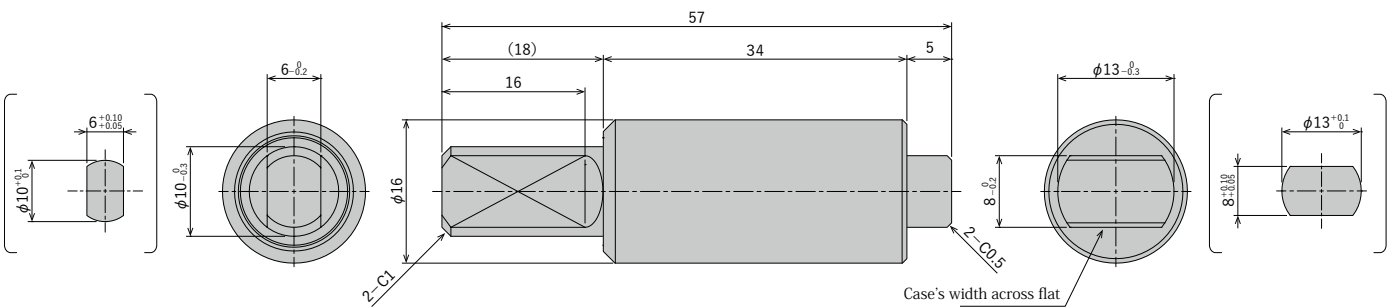


Specifications

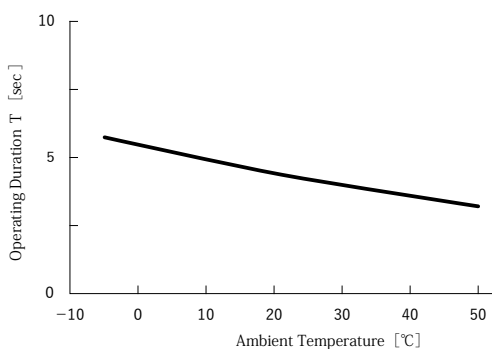
Model	Max. torque	Reverse torque	Damping direction	Max. angle °	Operating temperature °C	Materials			Oil type	Cap color	Weight g
						Main body	Cap	Rotating shaft			
FYN-U1-R103	1 N·m (10 kgf·cm)	0.5 N·m or lower (5 kgf·cm or lower)	Clockwise	115	-5~50	Zinc die-cast (ZDC)	Poly-phenylene Sulphide (PPS)	Zinc die-cast (ZDC)	Silicone oil	Black	40±4
FYN-U1-L103			Counter-clockwise							Brown	
FYN-U1-R203	2 N·m (20 kgf·cm)	0.7 N·m or lower (7 kgf·cm or lower)	Clockwise							Black	
FYN-U1-L203			Counter-clockwise							Brown	
FYN-U1-R303	3 N·m (30 kgf·cm)	0.9 N·m or lower (9 kgf·cm or lower)	Clockwise							Black	
FYN-U1-L303			Counter-clockwise							Brown	
FYN-U1-R403	4 N·m (40 kgf·cm)	3.2 N·m or lower (32kgf·cm or lower)	Clockwise							Black	
FYN-U1-L403			Counter-clockwise							Brown	
FYN-U1-R503	5 N·m (50 kgf·cm)	3.6 N·m or lower (36 kgf·cm or lower)	Clockwise							Black	
FYN-U1-L503			Counter-clockwise							Brown	

● (Note) Measured at 23°C±2°C

Dimension



Temperature Property



working angle

